



**Digitizer Pen with Eraser T-5000 /
Microsoft Surface Pro 2**

The stylus described in these pages is manufactured by **Fujitsu** and imported from Japan and is based on technology developed by **Wacom**.

Help us make this document better.

We take great pride in the quality of products we manufacture and/or resell. We would like to make these pages as accurate as they can be. We need your help to make this happen. If you find any inaccuracies, or procedures we neglected to include in these pages, we request that you send us an email and describe your comments. This will greatly help us all to get the most out of this technology.

info@InSyncSpeech.com

Table of Contents

OVERVIEW.....	5
PEN COMPONENTS	7
PEN DIMENSIONS.....	8
COMPATIBILITY	8
CALIBRATING THE PEN.....	8
HOLDING THE PEN	8
USING THE PEN BUTTONS.....	9
ERASING	10
STORING THE PEN	10
REPLACING THE PEN NIBS.....	11
SAFETY PRECAUTIONS.....	12

This page intentionally left blank.

OVERVIEW

This stylus is designed for active digitizers. More specifically, it is designed for tablet surfaces using Wacom active digitizer with white tip.

Wacom is a Japanese company, which pioneered digitizer technology in 1980s. For decades they held as much as 93% of the digitizer market. But since some of their patents expired, other companies have come into this arena. Today Wacom still holds 50% of the market. What does this mean for you? Wacom and this stylus works with maybe 40% of the digitizers out in the market today.

This pen contains Wacom technology available in some consumer devices. For example, Microsoft's Surface Pro and Surface Pro 2.

By integrating a special sensor into the touch screen and designing a stylus to work well in it, Wacom digitizers offer a variety of features such as:

1. **Pressure sensitivity:** The most important feature that a Wacom-based digitizer layer offers is the ability to detect different levels of pressure.
2. **Palm rejection:** When you're using your stylus to draw on your screen, the tablet can perform "palm rejection," ignoring your touches and allowing your palm to rest on the screen.
3. **Additional features:** This pen has an eraser on the other end, and flipping it over and rubbing the eraser on the screen will send an "erase" signal so you can erase things you have drawn in drawing applications. Holding a button on the pen and tapping the screen will perform a right-click. The digitizer layer can also detect when you're hovering the pen over the screen, allowing you to perform hover actions.
4. **No battery required:** The stylus doesn't need to include a battery, so you won't have to worry about charging it.

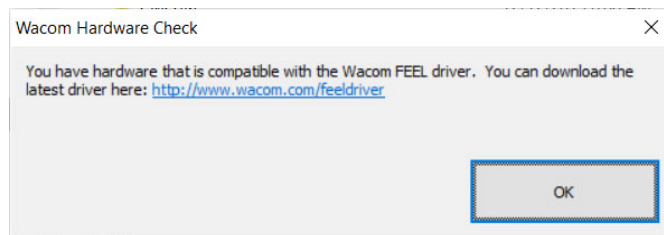
Note: Check the specification of your device for calibration and compatibility functions.

HOW TO CHECK IF YOUR DEVICE IS COMPATIBLE

Visit our website: <http://www.buddymicrophones.com/Digitizer>

1. Run the WacomHardwareCheck utility

This utility is the first step to verify if your device is compatible. It checks if you have a touch screen device, if you do, you will get a message that you can download the Wacom Feel Driver (<http://us.wacom.com/en/feeldriver/>)



2. Install the driver, when it finishes if your device is not compatible with this digitizer you will get the following message.





PEN COMPONENTS

The components of your pen function in the following manner:

Eraser : Sends a signal so you can erase thing you have drawn or written in your application

DuoSwitch: The DuoSwitch is programmable, (device permitted) and can be used to perform the same click and double click functions as the tip switch.

By default, the upper switch is set to Right Click and the lower switch is set to Pan/Scroll

Pen tip: The pen is activated as soon as it is brought within 5 mm (0.2 inch) of the pen display screen.

This allows you to position the screen cursor without touching the pen tip to the display screen.

PEN DIMENSIONS

Pressure levels	512
Pen tip travel	0.2 mm (0.008 in), approximately
Eraser tip travel	0.2 mm (0.008 in), approximately
Physical dimensions (L x D)	147.5 x 12.5 mm (5.81 x 0.49 in)
Weight	12 g (0.42 oz), approximately
Side switch type	Rocker switch

COMPATIBILITY

This device has been tested to be compatible with:

1. Microsoft Surface 2, Microsoft Surface Pro 2
2. Asus VivoTab Note
3. Lenovo Thinkpad Tablet
4. Yoga Tablet
5. Fujitsu T2020, T4410, T5010, T580, T5010A, T900, T730, T731, T732, T734, T902, TH700
6. Yoga Motion Computing LE1600 / LE1700
7. Dell Latitude 10

(Please Note: Does not support Surface RT/Surface Pro 3).

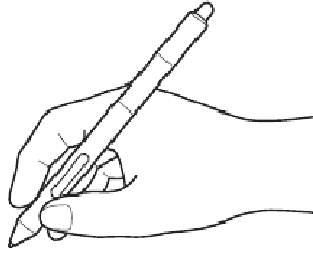
For ***Microsoft Surface 2 RT***, a driver is required. Please go to Wacom web site and download generic Legacy Driver for "Tablet PC". Wacom is the owner of technology in this stylus Pen.

CALIBRATING THE PEN

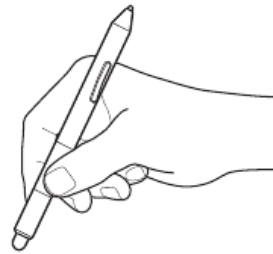
Check the manual of your device on how to calibrate your stylus.

HOLDING THE PEN

Hold the pen like you would hold a normal pen or pencil. Make sure the pen buttons are in a convenient location where you can toggle them with your thumb or forefinger, but not accidentally press them while drawing or positioning with the pen. Tilt the pen in any way that feels most comfortable



Holding for drawing/writing



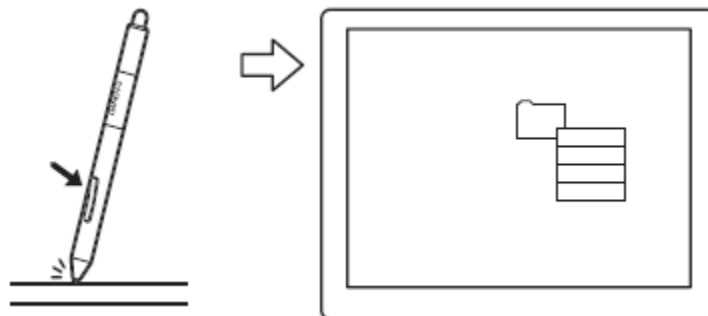
Holding for erasing

Important: When the pen is not in use, place it in the pen storage compartment or lay it flat on your desk. To maintain the sensitivity of your pen, do not store the tool in a container where it will rest on its tip.

USING THE PEN BUTTONS

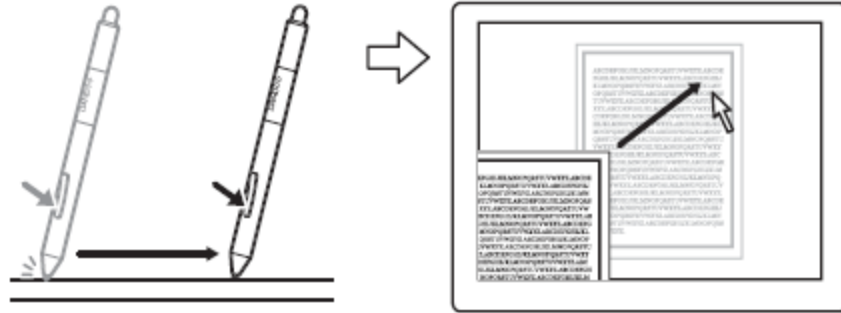
The pen comes equipped with two buttons. Each button has a programmable function that is selected when you press the button. You can use a pen button whenever the pen tip is within 5mm of the tablet active area. You do not have to touch the pen tip to the tablet in order to use a button.

The default button positions are:



Upper button: Right Click

Use Right Click to bring up application-specific or icon-specific menus

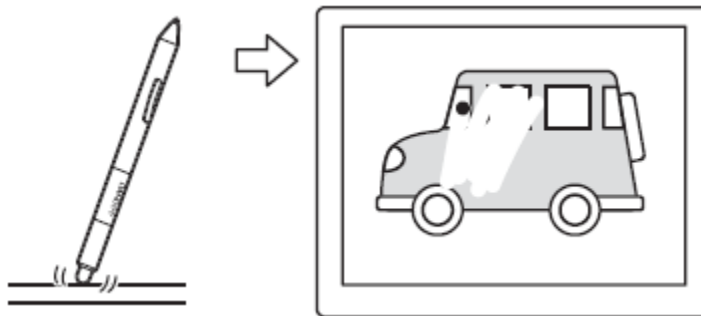


Lower button: Pan/Scroll

ERASING

The pen eraser works like the eraser on a pencil. You can erase intuitively and naturally in graphics applications that support the pen eraser.

When you use the pen eraser, the application will automatically switch to the eraser tool. In applications that support pressure sensitivity, you can select pressure-sensitive tools in the application tool palette to vary the width and depth of your erasures as you change the amount of pressure exerted upon the pen.



Erasing position

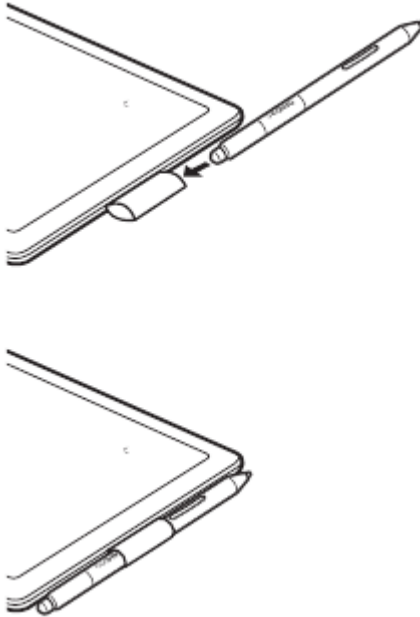
Important: When the pen is not in use, place it in the pen storage compartment or lay it flat on your desk. To maintain the sensitivity of your pen, do not store the tool in a container where it will rest on its tip.

STORING THE PEN

- When not in use, store the pen in the pen holder (if available).

- Insert the eraser end of the pen into the loop.
- Do not wedge the pen buttons inside the loop. Doing so may cause the buttons to be continually depressed and possibly fail.
- You can also lay the pen flat on your desk.

Important: The pen may be damaged if it falls out of an unsuitable stand. The sensitivity of your pen may be affected if stored in a container where it rests on the tip or eraser.

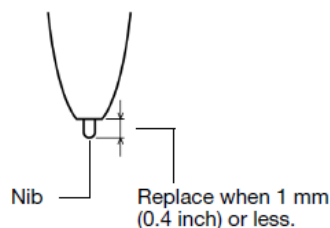


REPLACING THE PEN NIBS

The pen tip (nib) will wear with normal use. Excessive pressure will cause the nib to wear sooner. It's easy to tell when your pen nibs are wearing out. You'll feel more drag when you draw, or it will seem like your scratching the overlay with your pen

A worn nib may damage the coating on your display screen. To avoid this, periodic tip replacement is recommended.

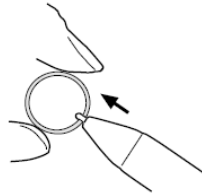
When the nib gets too short or develops a sharp edge, you can replace it with one of the extra nibs that came with the pen.



Important: When the pen is not in use, place it in the pen storage compartment or lay it flat on your desk. To maintain the sensitivity of your pen, do not store the tool in a container where it will rest on its tip.

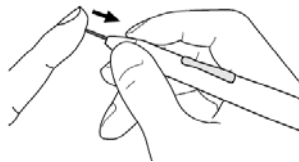
To remove the old nib:

Gently clasp it with the nib removal tool, pair of tweezers, needle-nosed plier, or similar instrument and pull the old nib straight out of the pen.



To insert a new nib:

Slide the new nib straight into the barrel of the pen (square end first). Firmly push the nib until it stops. The new nib will slide into the correct position.



WARNING: KEEP AWAY FROM CHILDREN

Prevent children from swallowing the pen tip or side switch. The pen tip (nib) or side switch may accidentally be pulled out if children are biting on them

SAFETY PRECAUTIONS

1. Keep your device away from heat sources, such as radiators, heat registers and other similar appliances.
2. Keep your device away from liquids
3. Protect your device from high humidity.
4. Keep this device away from children