

Buddy FlamingoMic 7G Portable QuickStart Guide

System Requirements

Windows XP SP2 or higher, Windows Vista, Windows 7, Mac OS 10.4 and Linux 2.6 and higher

Installing your Buddy FlamingoMic 7G

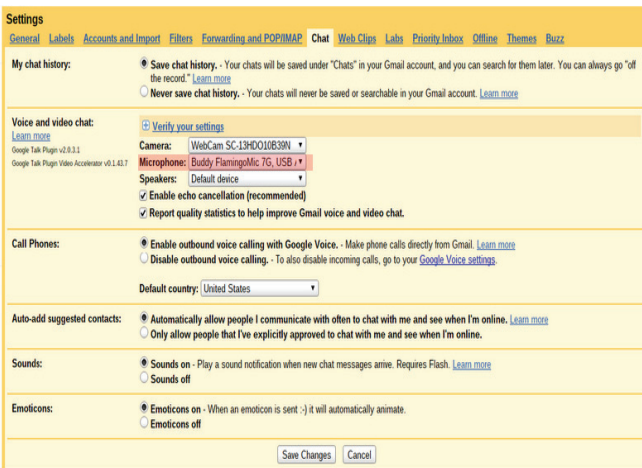
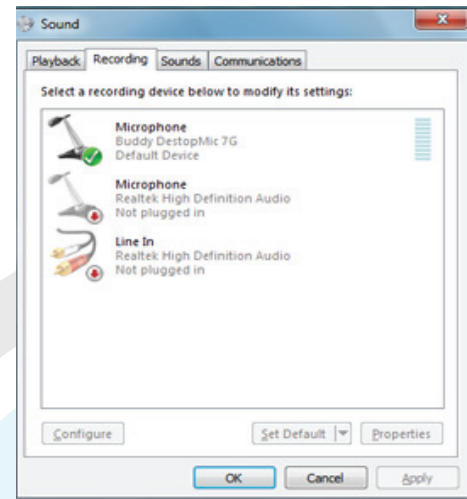
1. Plug the device into any USB slot on your computer.
2. Windows will now automatically load the appropriate drivers and configure the device.

Plug into PC



Once the Device has been Installed

1. If the device is unresponsive, make sure Windows has selected your Buddy FlamingoMic 7G as the "default device" for audio input. Open Control Panel>Hardware and Sound>Sound>Manage Audio Devices.
2. Locate the appropriate 7G device and click "set default". This ensures that your device is recognized by Windows as your default recording device.
3. If running speech recognition software, use the embedded features to set up the microphone for speech recognition.
4. If the device is being used simply as a recording device, configure the device in Windows for optimal sound quality. This can be done via Control Panel>Hardware and Sound>Sound>Manage Audio Devices. Once here, select the device and click "configure". Windows will then guide you through a quick optimization process.



Configuring Device on Google Chromebook

1. Plug device into any USB slot on your Chromebook
2. Go to GMail>Settings>Chat
3. Select "Buddy FlamingoMic 7G USB" as the microphone device
4. Use application (ie. Google Talk, Skype) to optimize the volume levels

Device Construction

The Buddy FlamingoMic 7G Portable has a fully flexible design. Be sure to use this to create a comfortable, ergonomic setup.

Speech Recognition

We have created our line of Buddy 7G products with speech recognition applications in mind. These devices yield high accuracy with Dragon NaturallySpeaking and other popular speech recognition software.

Additional Help and Troubleshooting

Visit our website at www.insyncspeech.com for help. You can also communicate with other users in our online forum. It is a great resource for troubleshooting and sharing tips and tricks on how to get the most out of your Buddy 7G devices.



InSync Speech Technologies, Inc.
58 Prosperity Avenue
Port Colborne, ON L3K 5X8
Canada

☎ : (716) 235-2400
☎ : (866) 446-9692
✉ : sales@insyncspeech.com
🌐 : www.insyncspeech.com